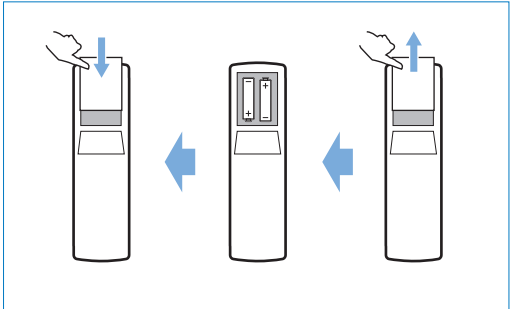
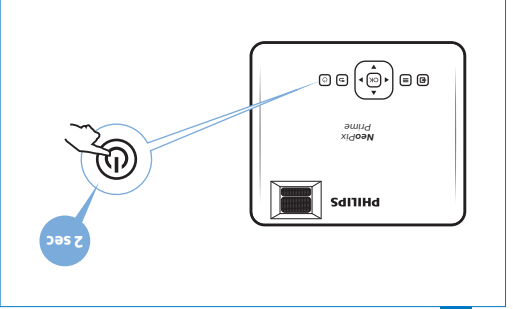


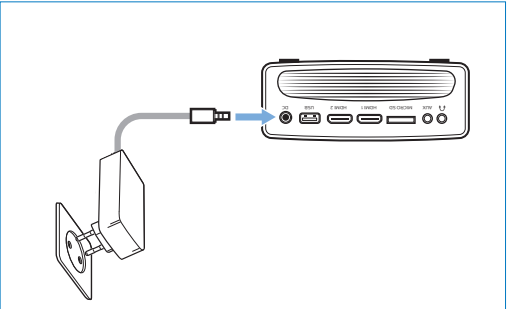
1 Remove lens cover



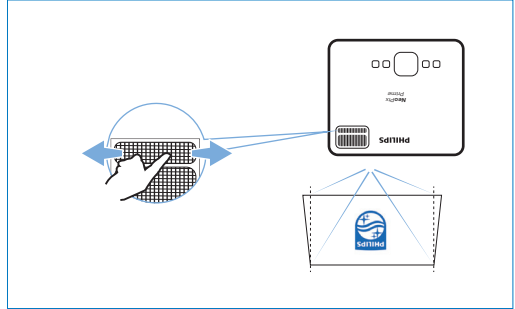
2



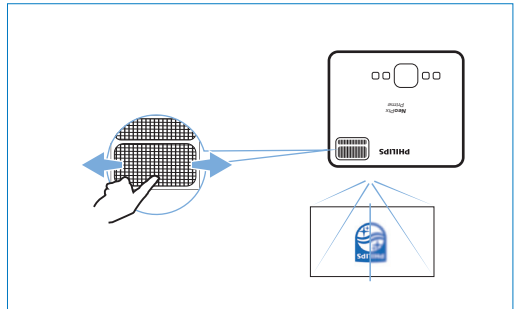
3 On



2 Power



5 keystone

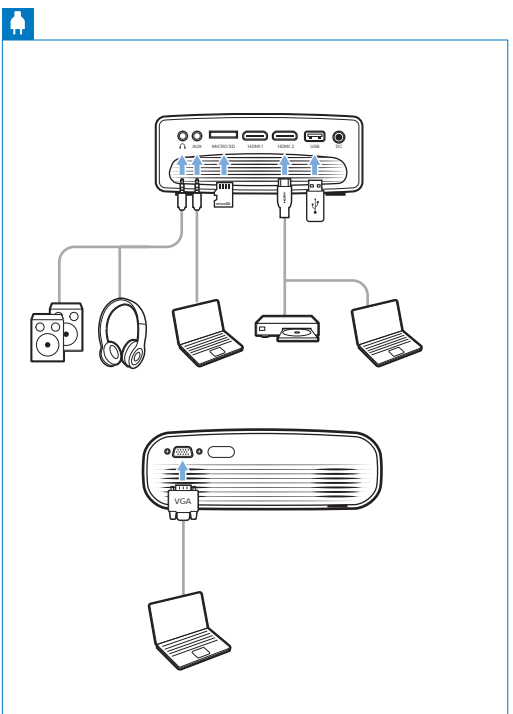


4 focus



Quick Start Guide

Register your product for further support and download the full user manual at: www.philips.com/support



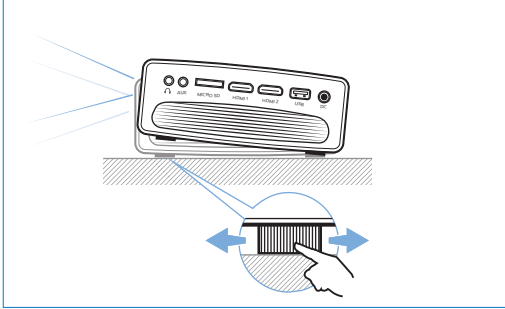
Screeneo Innovation SA
Route de Lully 5C
1131 - Tolochenaz - Switzerland
www.philips.com/welcome
philips.projector.eu@screeneo.com

Philips and the Philips Shield Emblem are registered trademarks of Koninklijke Philips N.V. used under license. Screeneo Innovation SA is the warrantor in relation to the product with which this booklet was packaged.

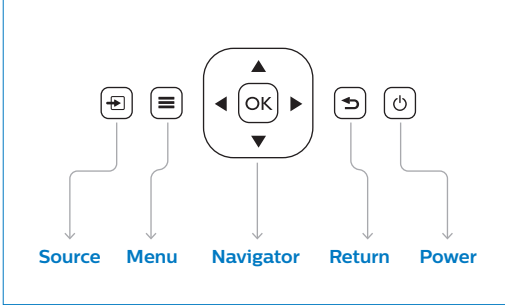
2019 © Screeneo Innovation SA
All right reserved

FCC ID: 2ASRT-NPX540
This device complies with part 15 of the FCC Rules. Operation is subject to the following two conditions: (1) This device may not cause harmful interference, and (2) this device must accept any interference received, including interference that may cause undesired operation.

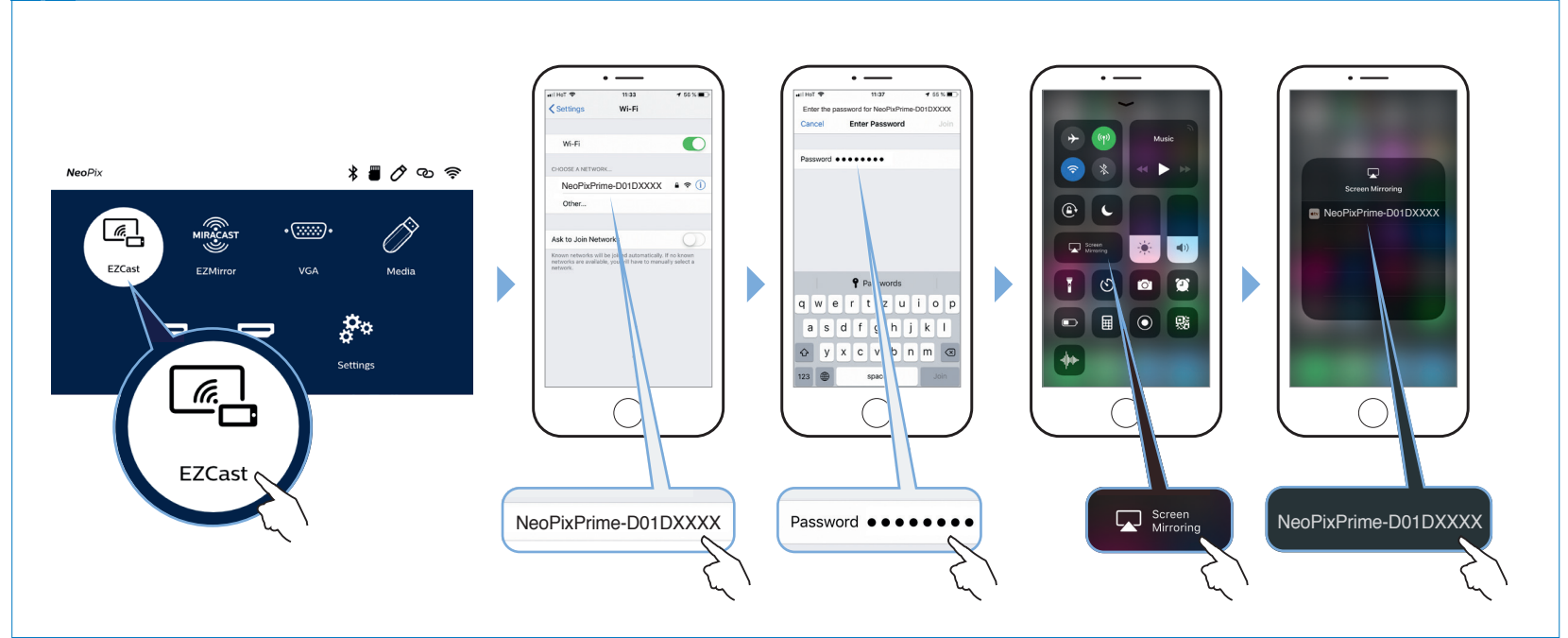
6 ▶ Adjustment knob



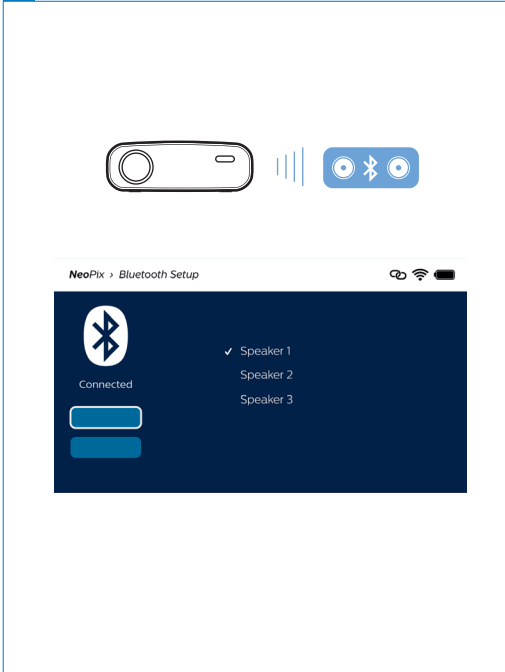
7 ▶ Keys



Apple Wireless screen mirroring



Bluetooth speaker



Android Wireless screen mirroring

